

F

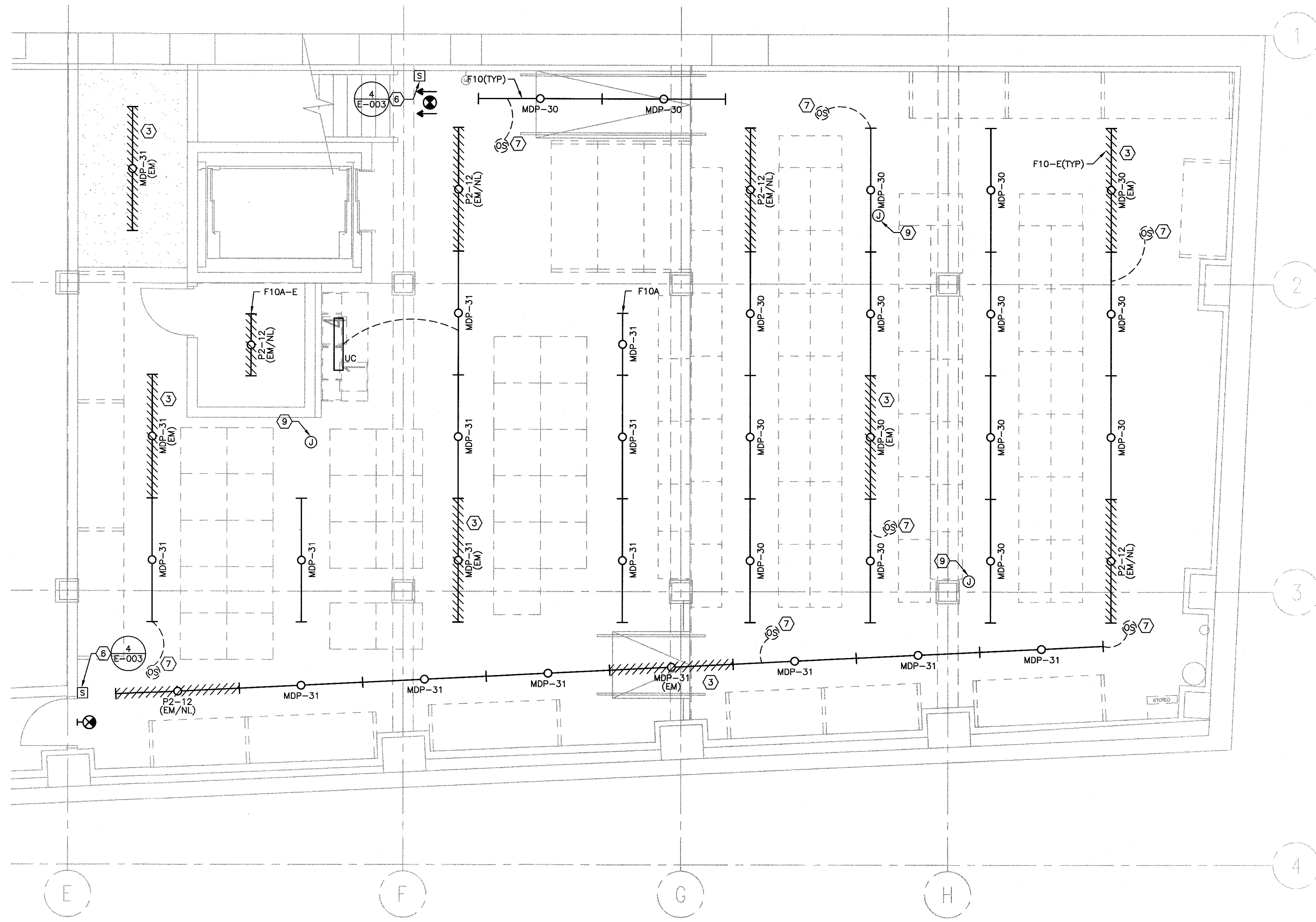
E

D

C

B

A



LIGHTING KEYED NOTES

- ① - ② NOT USED.
- ③ PROVIDE SEPARATE UN-SWITCHED HOT CIRCUIT TO EMERGENCY BALLAST IN FIXTURE FOR EMERGENCY OPERATION.
- ④ - ⑤ NOT USED.
- ⑥ STOCK AREA LIGHTS LV OVERRIDE. REFER TO DETAIL.
- ⑦ CEILING MOUNTED OCCUPANCY SENSOR SWITCH FOR CONTROL OF ROOM LIGHTING. OCCUPANCY SWITCH SHALL BE A WATT STOPPER DT-300. SET SWITCH FOR MAXIMUM SENSITIVITY. CONTROL AND ADJUST SWITCH TO MAINTAIN LIGHTS ON FOR 15 MINUTES AFTER LAST MOTION IS DETECTED. SWITCH SHALL BE ADJUSTED TO OVERRIDE THE LIGHT LEVEL ENERGY SAVING FEATURE. DIP SWITCH SETTING OF THE SWITCHES BENEATH THE COVER SHALL BE SET AS FOLLOWS:

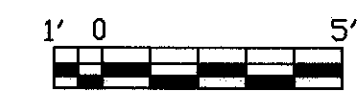
ON - DIP 4,7,8
OFF - DIP 1,2,3,5,6
- ⑧ NOT USED.
- ⑨ J-BOX FOR WIRELESS ACCESS POINT. SEE DETAILS ON SHEET E-202 AND E-205 FOR CONDUIT INFORMATION AND MOUNTING HEIGHTS.

LIGHTING GENERAL NOTES

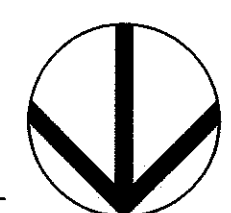
- 1) CONTRACTOR TO REMOVE ALL EXISTING LIGHTING, EXIT SIGNS AND LIGHTING CONTROL. REMOVE ALL CONDUIT AND CONDUCTOR BACK TO PANEL.

IN SALES AREA ALL BATTERY PACKS FOR EXIT AND EMERGENCY LIGHTS MUST BE REMOTE OR RECESSED. PAINT EXPOSED SURFACES TO MATCH ADJACENT FINISH.

ALL ABANDONED AND/OR UNUSED COMPONENTS CREATED OR EXPOSED DURING CONSTRUCTION, INCLUDING BUT NOT LIMITED TO HVAC, CABLES, PIPING, WIRING, AND ASSOCIATED SUPPORTS AND/OR ATTACHMENTS SHALL BE REMOVED.



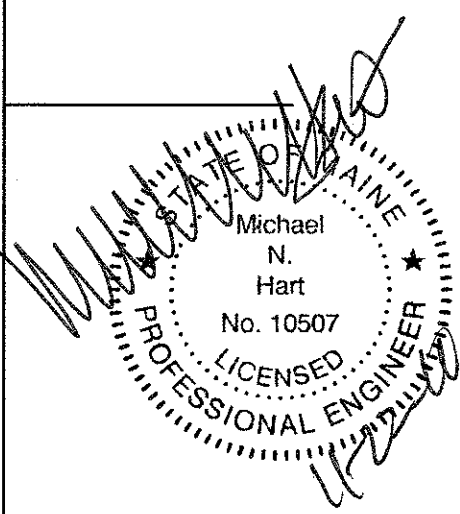
SCALE: 1/4" = 1'-0" @ FULL SIZE



OWNER:
WILLIAMS-SONOMA, INC.
3250 Van Ness Avenue
San Francisco, CA 94109
T 415 616 8602
F 415 439 8164
www.williams-sonoma.com



EEA Consulting Engineers
6515 Vaughn Ranch Road, Suite 200
Austin, Texas 78730-2314 USA
512.744.4400 main 512.744.4444 fax
www.eeace.com
State of Registration MAINE
Firm Registration No. NYA
EEA Project No. 20160538



west elm
Downtown Portland
164 Middle Street
Portland, ME 04101
PROJECT #006-160335.00

ISSUED / REVISED	DATE
PRELIMINARY SET	09/08/16
LL COORDINATION SET	11/08/16
LL/PERMIT SET	11/21/16

BASEMENT LIGHTING PLAN

E-140